



UNILOCK[®] DRIVECEL[™]

SAVE TIME AND GAIN MORE REVENUE

Save excavation time, material, labour costs and add more revenue to your season with DriveCel.

Unilock DriveCel is a rigid, geo-cellular confinement system designed for soil reinforcement and load distribution.

Made from 100% recycled low-density polyethylene, DriveCel boasts remarkable durability, with resistance to biological, chemical, and UV degradation.

DriveCel can be driven on before paver installation, and is designed to handle the weight of heavy-duty commercial vehicles. DriveCel can be used in a variety of applications, including permeable pavements, streetscapes, garage decks and as foundation support for retaining walls.

PERMEABILITY

When using a permeable (clear stone) base and bedding material, DriveCel is perfect for load-bearing applications where strength is paramount.



EASY TO INSTALL

Lightweight, easy to handle, and installs quickly by clicking the units together, making them into a continuous structural mat. Repairs or adjustments can easily be made any time during the project.



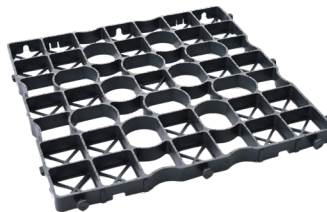
FLEXIBILITY

Allows for flexible installation, accommodating either a 1 sqm arrangement or divided into four separate units.

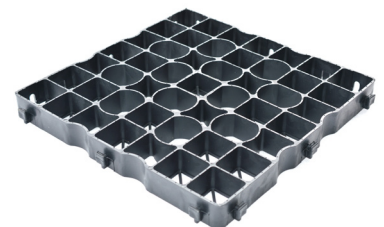


HIGH TENSILE & COMPRESSIVE STRENGTH

Creates a superior Reinforced Soil Structure (RSS) with high tensile and compressive strength, maximizing the performance of the pavement surface.



DRIVECEL30 LIGHT DUTY
20 x 20 x 1.2"
500 x 500 x 30mm



DRIVECEL50 HEAVY DUTY
20 x 20 x 2"
500 x 500 x 50mm

