

WINDERMERE® SMOOTH

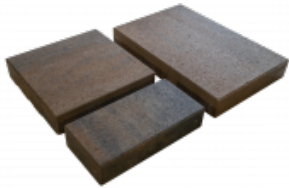
UNILOCK®

TECH SHEET

THICKNESS 100MM
REGION ONTARIO

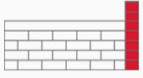


EDGE
ROUNDED BEVEL EDGE



APPLICATIONS

Note: Not all sizes are suitable for every application. Contact Unilock Representative for assistance.



Borders and Accents



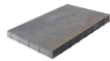
Patio & Walkway



Driveway

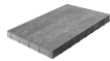
COLORS

CLIFFSIDE GREY FINISH: CLASSIC



18"X36"
450mm x 900mm x 100mm
17 3/4" x 35 1/2" x 3 7/8"

GRANITE FINISH: CLASSIC



18"X36"
450mm x 900mm x 100mm
17 3/4" x 35 1/2" x 3 7/8"

DUSK FINISH: CLASSIC



18"X36"
450mm x 900mm x 100mm
17 3/4" x 35 1/2" x 3 7/8"

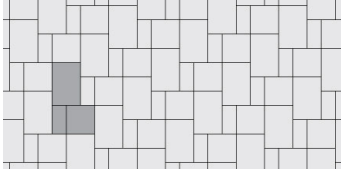
SAFARI FINISH: CLASSIC



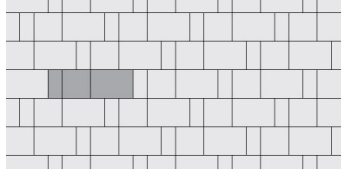
18"X36"
450mm x 900mm x 100mm
17 3/4" x 35 1/2" x 3 7/8"

JOINT SPACING = 4MM

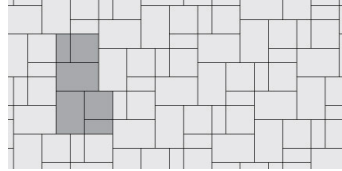
LAYING PATTERNS



LP WINDERMERE FIXED RANDOM
A REV



LP WINDERMERE FIXED RANDOM
C



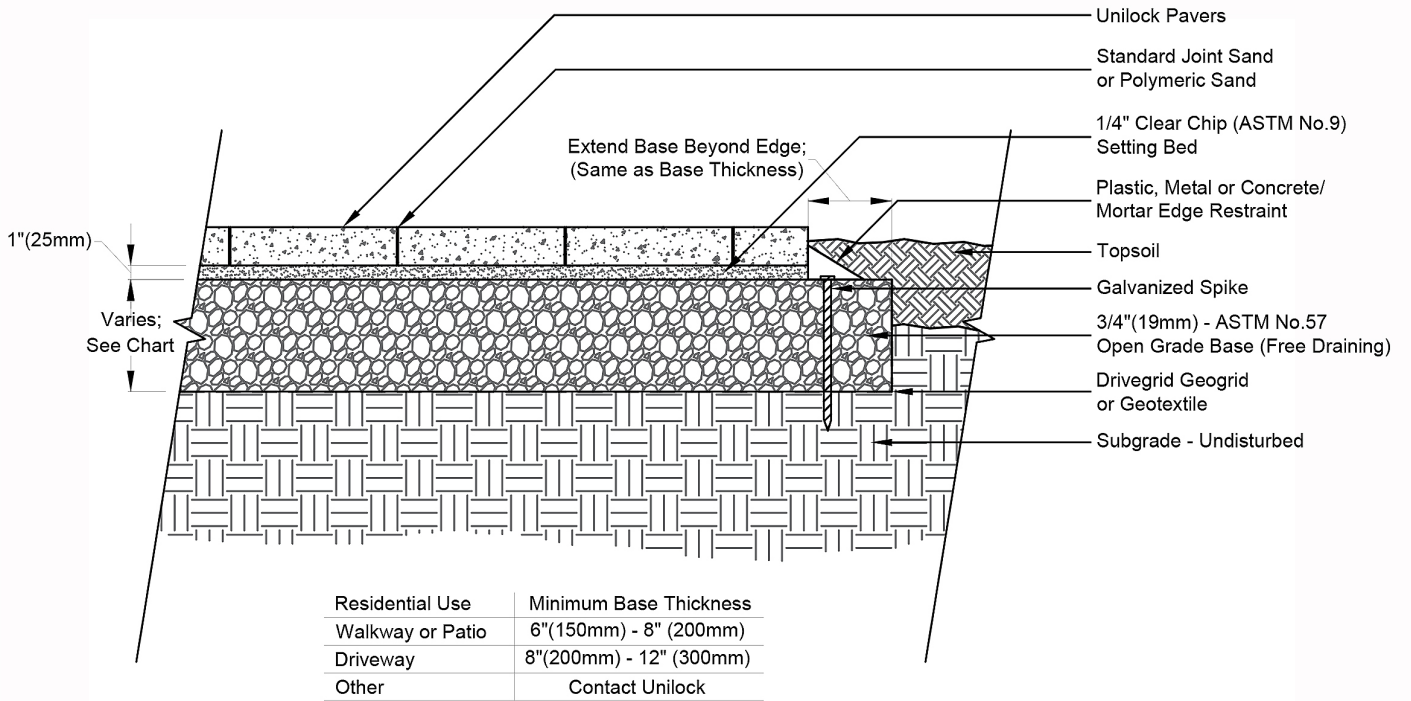
LP WINDERMERE FIXED RANDOM
B REV



LP WINDERMERE FIXED RANDOM
D

TYPICAL CROSS SECTION

Note: Base, screed bed, infill aggregates and or reinforcements may vary based on project requirements or as specified by engineer.



PACKAGING

	(70) RANDOM RANDOM BUNDLE	SMALL RECTANGLE	15"X30"	18"X36"
UNIT THICKNESS (MM)	70	70	60	100
LAYERS PER BUNDLE	9	9	6	5
SQ FT PER BUNDLE	91.88	91.88	54.50	43.59
SQ FT PER LAYER	10.21	10.21	9.08	8.72
SQ FT PER UNIT	1.28	0.68	3.03	4.36
UNITS PER BUNDLE	72	135	18	10
UNITS PER LAYER	8	15	3	2
LIN FT PER BUNDLE - SOLDIER	78.75	22.44	29.53	-
LIN FT PER LAYER - SOLDIER	8.75	3.74	5.91	-
LIN FT PER UNIT - SOLDIER	0.58	1.25	2.95	-
LIN FT PER BUNDLE - SAILOR	157.50	44.88	59.06	-
LIN FT PER LAYER - SAILOR	17.50	7.48	11.81	-
LBS PER BUNDLE	2,941.79	2,941.80	1,495.60	1,994
LBS PER LAYER	326.87	326.87	249.27	398.80
LBS PER UNIT	40.86	21.79	83.09	199.40

INSTALLATION NOTES

Windermere has a unique, relaxed rustic appeal with a slightly undulated surface, and is an economical thru-mix paver which can be installed by hand or mechanically. Combine Windermere with Copthorne or Courtstone for a signature look.

Recommended Base Stabilization – one layer of DriveGrid™ stabilization grid between subgrade and base material. Recommended depth 8" to 10" below pavers for maximum stability and performance. Use under Standard Base or Permeable Base.

Standard Base – Min. 6" – 8" of ¾" Crusher Run gravel (any road base standard in accordance with ASTM-D2940) compacted to 98% Standard Proctor Density (SPD).

Standard Bedding Course – 1" thick of coarse sand– in accordance with ASTM-D2940 screeded over base.

Alternative Permeable Base – Min. 6" – 8" of ¾" clear open-graded stone compacted to achieve full particle lock-up and consolidation. (Clear open-graded does not compact but does consolidate slightly by rattling the particles together.)

Alternative Permeable Bedding Course – 1" thick of 1/4" clear open-graded chip stone – (ASTM No. 8) screeded over base.

Special Note: Concrete Direct Overlay – In some areas of the country and in some applications pavers are very successfully placed directly over concrete. Concrete as a base is in itself quite strong, but it can affect the structural integrity of the paver particularly in vehicular applications, where the concrete below is sub-par. The following considerations must be taken into account to insure that the concrete below the surface is ideal:

1. Concrete integrity – concrete must be in good condition, and not crumbling
2. Drainage slope – concrete below must be sloped away from all buildings and structures
3. Drainage holes – In lowest areas of the concrete, drill 1" holes in concrete (on 12" centers) and fill holes with ¼" chip (ASTM No. 8)
4. Base drainage - the area below the concrete must not be subject to frost movement
5. Surface - surface must be totally smooth and flat equivalent to the desired finished surface
6. Waterproofing - may be required when installing pavers over concrete where there is a basement or cold cellar below. Install an impervious rubber membrane over the surface prior to installing any pavers over the surface.
7. Jointing Sand - Use an impervious polymeric sand when installing over concrete

Jointing Material and Joint Stabilization

All sands must meet ASTM C144 or C33 Specifications. For best appearance and optimal performance,, keep jointing materials approximately 1/8" below the chamfer (bevel edge) of the paver.

Good Option: Ordinary sharp jointing sand in accordance with ASTM C144 or C33. (Common name: Concrete Sand)

Best Option: Any polymeric sand or ordinary concrete sand stabilized by a water-based or solvent-based joint sand stabilizer sealer. Always follow manufacturer's application specifications and requirements.

Handling – This product has no special handling requirements.

Edge Restraint - Always install an edge restraint around the perimeter of any paver installation not restrained by building structures. Spike-in edge restraints come in plastic and metal and work well for most applications. A concrete curb or a sub-surface concrete wedge can also be installed to retain the edge.

Paver Compaction - Always use a protective polymer pad on the bottom of your compactor when doing the final compaction of the pavers. An alternative is to use a rubber-roller compactor for the final compaction.

Cleaners – Any cleaner specifically designed for pavers may be used for color restoration or general cleaning. Follow manufacturer's dilution rates and application procedures. Always test a small area to make sure the results are as expected.

Sealers

- Product may be sealed for aesthetic or cleanliness reasons but it is not required
- Use any sealer approved for concrete pavers
- Select type for desired aesthetics

- Product must be cleaned before sealing
- Always read and follow manufacturer's application procedures
- Always test a small area to make sure the results are as expected

The Americans with Disabilities Act Accessibility Guidelines (ADAAG) provides measurable criteria to determine compliance, not individual product evaluation. Gaps, joints or openings, greater than ½" horizontal and ¼" vertical should be avoided as they can disrupt wheelchair maneuvering (United States Access Board – Guidelines and Standards).

Contact Unilock Representative for actual color samples and availability. Unilock reserves the right to change product information without notice.

PDF Generated July 3, 2026, 10:15 am

