

# URBAN™

**UNILOCK®**

TECH SHEET

**THICKNESS** 60MM

**REGION** OHIO



**EDGE**  
ROUNDED BEVEL EDGE



**APPLICATIONS**

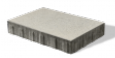
Note: Not all sizes are suitable for every application. Contact Unilock Representative for assistance.



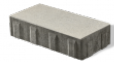
**Patio & Walkway**

**COLORS**

**INDIANA BUFF  
FINISH: SMOOTH  
PREMIER**



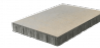
**LARGE RECTANGLE**  
380mm x 570mm x 60mm  
15" x 22 1/2" x 2 3/8"



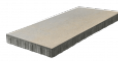
**SMALL RECTANGLE**  
190mm x 380mm x 60mm  
7 1/2" x 15" x 2 3/8"



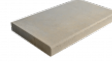
**SQUARE**  
380mm x 380mm x 60mm  
15" x 15" x 2 3/8"



**18"X24"**  
450mm x 600mm x 60mm  
17 3/4" x 23 5/8" x 2 3/8"

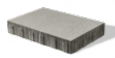


**18"X36"**  
450mm x 900mm x 60mm  
17 3/4" x 35 1/2" x 2 3/8"

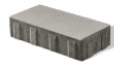


**COPING CHAMFERED**  
900mm x 60mm x 485mm  
35 1/2" x 2 3/8" x 19"

**STERLING  
FINISH: SMOOTH  
PREMIER**



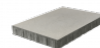
**LARGE RECTANGLE**  
380mm x 570mm x 60mm  
15" x 22 1/2" x 2 3/8"



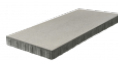
**SMALL RECTANGLE**  
190mm x 380mm x 60mm  
7 1/2" x 15" x 2 3/8"



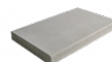
**SQUARE**  
380mm x 380mm x 60mm  
15" x 15" x 2 3/8"



**18"X24"**  
450mm x 600mm x 60mm  
17 3/4" x 23 5/8" x 2 3/8"

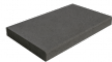
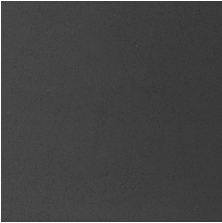


**18"X36"**  
450mm x 900mm x 60mm  
17 3/4" x 35 1/2" x 2 3/8"



**COPING CHAMFERED**  
900mm x 60mm x 485mm  
35 1/2" x 2 3/8" x 19"

**DARK CHARCOAL  
FINISH: SMOOTH  
PREMIER**



**COPING CHAMFERED**  
900mm x 60mm x 485mm  
35 1/2" x 2 3/8" x 19"

JOINT SPACING = 4MM

## LAYING PATTERNS



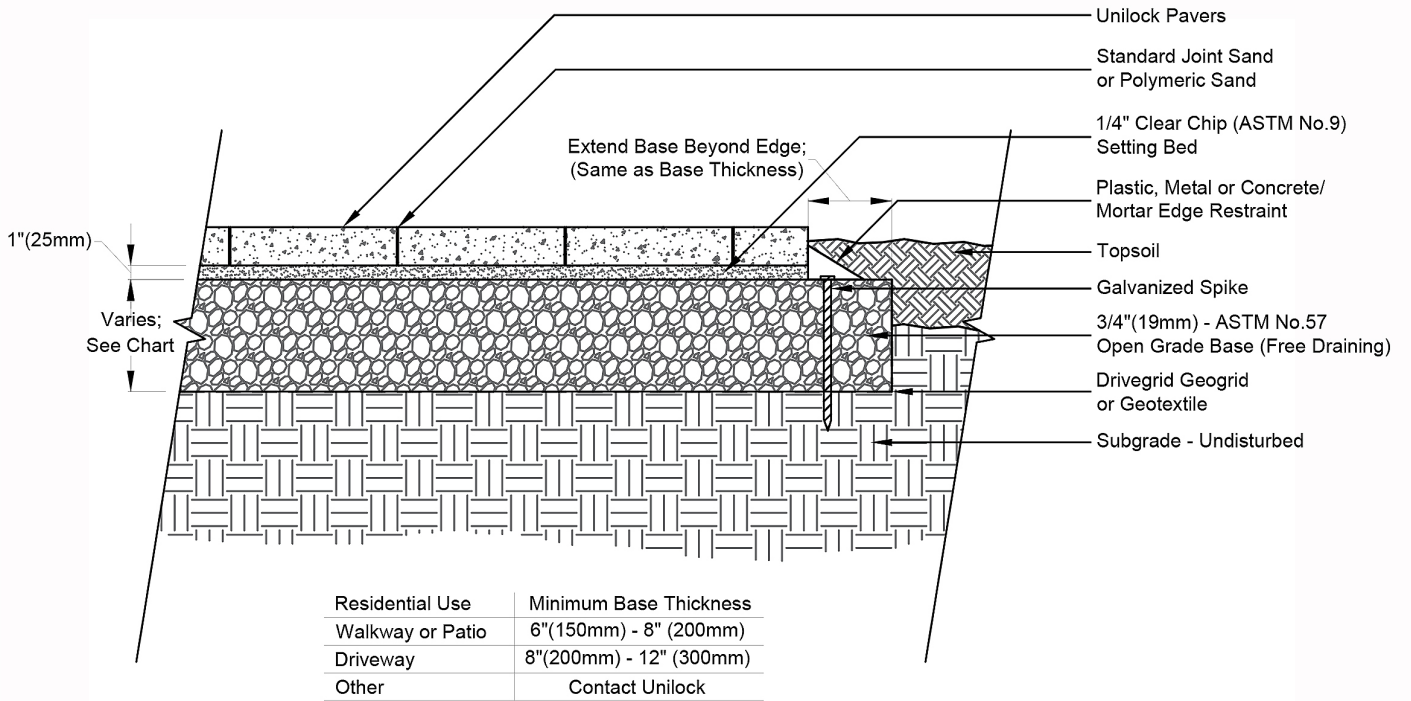
LP URBAN FIXED RANDOM F



LP URBAN FIXED RANDOM E.

**TYPICAL CROSS SECTION**

Note: Base, screed bed, infill aggregates and or reinforcements may vary based on project requirements or as specified by engineer.



**PACKAGING**

	(60) RANDOM RANDOM BUNDLE	18"X24"	18"X36"	COPING CHAMFERED	COPING BULLNOSE
UNIT THICKNESS (MM)	60	60	60	60	60
LAYERS PER BUNDLE	9	8	6	6	6
SQ FT PER BUNDLE	104.91	93	52.31	-	-
SQ FT PER LAYER	11.66	11.63	8.72	-	-
SQ FT PER UNIT	1.46	2.91	4.36	-	-
UNITS PER BUNDLE	72	32	12	12	12
UNITS PER LAYER	8	4	2	2	2
LIN FT PER BUNDLE - SOLDIER	47.25	35.44	-	-	-
LIN FT PER LAYER - SOLDIER	5.91	5.91	-	-	-
LIN FT PER UNIT - SOLDIER	1.48	2.95	-	-	-
LIN FT PER BUNDLE - SAILOR	84.15	62.99	70.87	35.46	35.46
LIN FT PER LAYER - SAILOR	9.35	7.87	11.81	5.91	5.91
LBS PER BUNDLE	2,878.20	2,552.39	1,739.30	1,547.40	1,547.40
LBS PER LAYER	319.80	319.05	289.88	257.90	257.90
LBS PER UNIT	39.98	79.76	144.94	128.95	128.95

## INSTALLATION NOTES

---

### URBAN™

Urban Line pavers are wide-format pavers manufactured at only 2 3/8" (60mm) thick. This allows for easier installation of non-vehicular applications in urban areas where access or space is limited. Urban Line pavers are made with EnduraColor™, for optimal color vibrancy and longevity.

Recommended Base Stabilization – one layer of DriveGrid™ stabilization grid between subgrade and base material. Recommended depth 8" to 10" below pavers for maximum stability and performance. Use under Standard Base or Permeable Base.

Standard Base – Min. 6" – 8" of ¾" Crushed gravel (any road base standard in accordance with ASTM-D2940) compacted to 98% Standard Proctor Density (SPD).

Standard Bedding Course – 1" thick of coarse sand– in accordance with ASTM-D2940 screeded over base.

Alternative Permeable Base – Min. 6" – 8" of ¾" clear open-graded stone compacted to achieve full particle lock-up and consolidation. (Note: Clear open-graded does not compact but does consolidate slightly by vibrating the particles together.)

Alternative Permeable Bedding Course – 1" thick of frac14;" clear open-graded chip stone – (ASTM No. 8) screeded over base.

Special Note: Concrete Direct Overlay – In some areas of the country and in some applications, pavers are very successfully placed directly over concrete. Concrete as a base is in itself quite strong, but it can affect the structural integrity of the paver particularly in vehicular applications, where the concrete below is sub-par. The following considerations must be taken into account to insure that the concrete below the surface is ideal:

1. Concrete integrity – concrete must be in good condition, and not crumbling
2. Drainage slope – concrete below must be sloped away from all buildings and structures
3. Drainage holes – In lowest areas of the concrete, drill 1" holes in concrete (on 12" centers) and fill holes with ¼" chip (ASTM No. 8)
4. Base drainage - the area below the concrete must not be subject to frost movement
5. Surface - surface must be totally smooth and flat equivalent to the desired finished surface
6. Waterproofing - may be required when installing pavers over concrete where there is a basement or cold cellar below. Install an impervious rubber membrane over the surface prior to installing any pavers over the surface.
7. Jointing Sand - Use an impervious polymeric sand when installing over concrete

### Jointing Material and Joint Stabilization

All sands must meet ASTM C144 or C33 Specifications. For best appearance and optimal performance, keep jointing materials approximately 1/8" below the chamfer (bevel edge) of the paver.

Good Option: Ordinary sharp jointing sand in accordance with ASTM C144 or C33. (Common name: Concrete Sand) Important Information (Will update to the same Product Family)

Best Option 1: Any polymeric sand or resin-based joint sand . Always follow manufacturer's specifications and requirements.

Best Option 2: Ordinary clean concrete sand stabilized with a water-based or solvent-based joint sand stabilizer sealer. Always follow sealer manufacturer's application specifications and requirements.

Handling – This product is large format and should be installed using a suction lifting device. Do not let units bang against each other when handling as chipping may occur.

Edge Restraint - Install an edge restraint around the perimeter of any pavers not restrained by existing concrete edges and/or building structures. Spike-in edge restraints come in plastic and metal and work well for most applications. A concrete curb or a sub-surface concrete wedge can also be installed to retain the edge.

Paver Compaction - Only use a rubber-roller compactor for the final compaction.

Cleaners – Any cleaner specifically designed for pavers may be used for color restoration or general cleaning. Follow manufacturer's dilution rates and application procedures. Always test a small area to make sure the results are as expected.

### Sealers

- Product may be sealed for aesthetic or cleanliness reasons but it is not required
- Use any sealer approved for concrete pavers
- Select type for desired aesthetics
- Product must be cleaned before sealing
- Always read and follow manufacturer's application procedures
- Always test a small area to make sure the results are as expected

Note: The Americans with Disabilities Act Accessibility Guidelines (ADAAG) provides measurable criteria to determine compliance, not individual product evaluation. Gaps, joints or openings, greater than ½" horizontal and ¼" vertical should be avoided as they can disrupt wheelchair maneuvering (United States Access Board – Guidelines and Standards).

---

Contact Unilock Representative for actual color samples and availability. Unilock reserves the right to change product information without notice.

PDF Generated December 22, 2024, 11:58 am

