

# URBAN™ COPING

**UNILOCK®**

TECH SHEET

THICKNESS 60MM  
REGION ONTARIO



EDGE  
CHAMFERED EDGE DETAIL

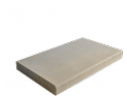
**UNILOCK®** Exclusive Technologies

ENDURACOLOR



COLORS

INDIANA BUFF  
FINISH: SMOOTH PREMIER

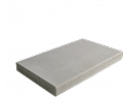


**COPING CHAMFERED**  
900mm x 60mm x 485mm  
35 1/2" x 2 3/8" x 19"



**FULLNOSE COPING**  
600mm x 60mm x 355mm  
23 5/8" x 2 3/8" x 14"

STERLING  
FINISH: SMOOTH PREMIER

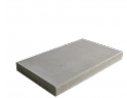


**COPING CHAMFERED**  
900mm x 60mm x 485mm  
35 1/2" x 2 3/8" x 19"

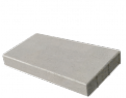


**FULLNOSE COPING**  
600mm x 60mm x 355mm  
23 5/8" x 2 3/8" x 14"

LINEN GREY  
FINISH: SMOOTH PREMIER

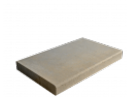


**COPING CHAMFERED**  
900mm x 60mm x 485mm  
35 1/2" x 2 3/8" x 19"

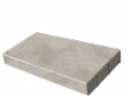


**COPING CHAMFERED**  
600mm x 60mm x 355mm  
23 5/8" x 2 3/8" x 14"

LINEN BUFF  
FINISH: SMOOTH PREMIER

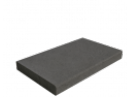
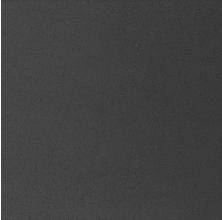


**COPING CHAMFERED**  
900mm x 60mm x 485mm  
35 1/2" x 2 3/8" x 19"

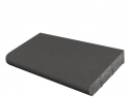


**COPING CHAMFERED**  
600mm x 60mm x 355mm  
23 5/8" x 2 3/8" x 14"

DARK CHARCOAL  
FINISH: SMOOTH PREMIER



**COPING CHAMFERED**  
900mm x 60mm x 485mm  
35 1/2" x 2 3/8" x 19"



**FULLNOSE COPING**  
600mm x 60mm x 355mm  
23 5/8" x 2 3/8" x 14"

PACKAGING

	COPING CHAMFERED	FULLNOSE COPING	FULLNOSE COPING	COPING CHAMFERED	COPING BULLNOSE
UNIT THICKNESS (MM)	60	60	60	60	60
LAYERS PER BUNDLE	6	6	6	6	6
FCFT PER BUNDLE	6.96	6.96	-	-	-
FCFT PER LAYER	1.16	1.16	-	-	-
FCFT PER UNIT	0.58	0.58	-	-	-
UNITS PER BUNDLE	12	24	12	24	24
UNITS PER LAYER	2	4	2	4	4
LBS PER BUNDLE	1,547.40	1,509.74	1,547.40	1,509.74	1,509.74
LBS PER LAYER	257.90	251.62	257.90	251.62	251.62
LBS PER UNIT	128.95	62.91	128.95	62.91	62.91

## INSTALLATION NOTES

---

Urban coping units can be matched with large-format slabs to deliver a sleek, contemporary look that's perfect for patios and pool surrounds. Urban coping is manufactured with EnduraColor™ technology, delivering a refined surface that resists the appearance of fading over time.

**Recommended Base Stabilization** – one layer of DriveGrid™ stabilization grid between subgrade and base material. Recommended depth 8" to 10" below pavers for maximum stability and performance. Use under Standard Base or Permeable Base.

**Standard Base** – Min. 6" – 8" of ¾" Crushed gravel (any road base standard in accordance with ASTM-D2940) compacted to 98% Standard Proctor Density (SPD).

**Standard Bedding Course** – 1" thick of coarse sand– in accordance with ASTM-D2940 screeded over base.

**Alternative Permeable Base** – Min. 6" – 8" of ¾" clear open-graded stone compacted to achieve full particle lock-up and consolidation. (Note: Clear open-graded does not compact but does consolidate slightly by vibrating the particles together.)

**Alternative Permeable Bedding Course** – 1" thick of frac14;" clear open-graded chip stone – (ASTM No. 8) screeded over base.

**Special Note: Concrete Direct Overlay** – In some areas of the country and in some applications, pavers are very successfully placed directly over concrete. Concrete as a base is in itself quite strong, but it can affect the structural integrity of the paver particularly in vehicular applications, where the concrete below is sub-par. The following considerations must be taken into account to insure that the concrete below the surface is ideal:

1. Concrete integrity – concrete must be in good condition, and not crumbling
2. Drainage slope – concrete below must be sloped away from all buildings and structures
3. Drainage holes – In lowest areas of the concrete, drill 1" holes in concrete (on 12" centers) and fill holes with ¼" chip (ASTM No. 8)
4. Base drainage - the area below the concrete must not be subject to frost movement
5. Surface - surface must be totally smooth and flat equivalent to the desired finished surface
6. Waterproofing - may be required when installing pavers over concrete where there is a basement or cold cellar below. Install an impervious rubber membrane over the surface prior to installing any pavers over the surface.
7. Jointing Sand - Use an impervious polymeric sand when installing over concrete

### Jointing Material and Joint Stabilization

All sands must meet ASTM C144 or C33 Specifications. For best appearance and optimal performance, keep jointing materials approximately 1/8" below the chamfer (bevel edge) of the paver.

**Good Option: Ordinary sharp jointing sand** in accordance with ASTM C144 or C33. (Common name: Concrete Sand) Important Information (Will update to the same Product Family)

**Best Option 1:** Any polymeric sand or resin-based joint sand . Always follow manufacturer's specifications and requirements.

**Best Option 2:** Ordinary clean concrete sand stabilized with a water-based or solvent-based joint sand stabilizer sealer. Always follow sealer manufacturer's application specifications and requirements.

**Handling** – This product is large format and should be installed using a suction lifting device. Do not let units bang against each other when handling as chipping may occur.

**Edge Restraint** - Install an edge restraint around the perimeter of any pavers not restrained by existing concrete edges and/or building structures. Spike-in edge restraints come in plastic and metal and work well for most applications. A concrete curb or a sub-surface concrete wedge can also be installed to retain the edge.

**Paver Compaction** - Only use a rubber-roller compactor for the final compaction.

**Cleaners** – Any cleaner specifically designed for pavers may be used for color restoration or general cleaning. Follow manufacturer's dilution rates and application procedures. Always test a small area to make sure the results are as expected.

### Sealers

- Product may be sealed for aesthetic or cleanliness reasons but it is not required

- Use any sealer approved for concrete pavers
- Select type for desired aesthetics
- Product must be cleaned before sealing
- Always read and follow manufacturer's application procedures
- Always test a small area to make sure the results are as expected

Note: The Americans with Disabilities Act Accessibility Guidelines (ADAAG) provides measurable criteria to determine compliance, not individual product evaluation. Gaps, joints or openings, greater than ½" horizontal and ¼" vertical should be avoided as they can disrupt wheelchair maneuvering (United States Access Board – Guidelines and Standards).

---

Contact Unilock Representative for actual color samples and availability. Unilock reserves the right to change product information without notice.

PDF Generated June 13, 2025, 10:26 am

