

URBAN™ ALLURE

UNILOCK

TECH SHEET

THICKNESS 60MM

REGION OHIO

IMAGE
UNAVAILABLE

Please contact your
Unilock
Representative for
assistance.

IMAGE
UNAVAILABLE



EDGE
ROUNDED BEVEL EDGE

IMAGE
UNAVAILABLE

Please contact your
Unilock
Representative for
assistance.

UNILOCK Exclusive Technologies

- ENDURACOLOR
- EASYCLEAN™
- COMFORT STEP

APPLICATIONS

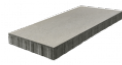
Note: Not all sizes are suitable for every application. Contact Unilock Representative for assistance.



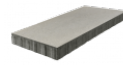
Patio & Walkway

COLORS

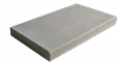
LINEN GREY FINISH: SMOOTH PREMIER



18"X24"
450mm x 600mm x 60mm
17 3/4" x 23 5/8" x 2 3/8"

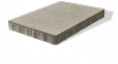


18"X36"
450mm x 900mm x 60mm
17 3/4" x 35 1/2" x 2 3/8"

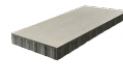


COPING CHAMFERED
900mm x 60mm x 485mm
35 1/2" x 2 3/8" x 19"

LINEN BUFF FINISH: SMOOTH PREMIER



18"X24"
450mm x 600mm x 60mm
17 3/4" x 23 5/8" x 2 3/8"



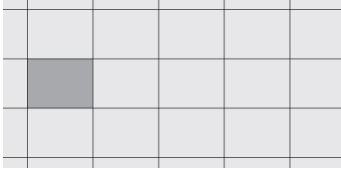
18"X36"
450mm x 900mm x 60mm
17 3/4" x 35 1/2" x 2 3/8"



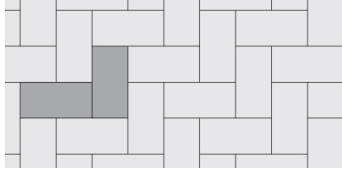
COPING CHAMFERED
900mm x 60mm x 485mm
35 1/2" x 2 3/8" x 19"

JOINT SPACING = 4MM

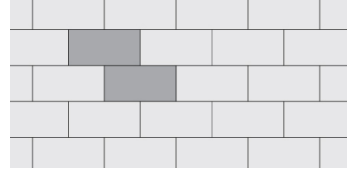
LAYING PATTERNS



LP URBANALLURE 18X24 SB B



LP URBANALLURE 18X36 HB C.



LP URBANALLURE 18X36 RB D

TYPICAL CROSS SECTION

Note: Base, screed bed, infill aggregates and or reinforcements may vary based on project requirements or as specified by engineer.



PACKAGING

	18"X24"	18"X36"	COPING CHAMFERED	COPING BULLNOSE
UNIT THICKNESS (MM)	60	60	60	60
LAYERS PER BUNDLE	8	6	6	6
SQ FT PER BUNDLE	93	52.31	-	-
SQ FT PER LAYER	11.63	8.72	-	-
SQ FT PER UNIT	2.91	4.36	-	-
UNITS PER BUNDLE	32	12	24	12
UNITS PER LAYER	4	2	4	2
LIN FT PER BUNDLE - SOLDIER	47.25	35.44	-	-
LIN FT PER LAYER - SOLDIER	5.91	5.91	-	-
LIN FT PER UNIT - SOLDIER	1.48	2.95	-	-
LIN FT PER BUNDLE - SAILOR	62.99	70.87	35.46	35.46
LIN FT PER LAYER - SAILOR	7.87	11.81	5.91	5.91
LBS PER BUNDLE	2,552.39	1,739.30	1,547.40	1,547.40
LBS PER LAYER	319.05	289.88	257.90	257.90
LBS PER UNIT	79.76	144.94	64.48	128.95

INSTALLATION NOTES

URBAN™ ALLURE

Urban Line pavers are wide-format pavers manufactured at only 2 3/8" (60mm) thick. This allows for easier installation of non-vehicular applications in urban areas where access or space is limited. Urban Line pavers are made with EnduraColor™, for optimal color vibrancy and longevity.

Recommended Base Stabilization – one layer of DriveGrid™ stabilization grid between subgrade and base material. Recommended depth 8" to 10" below pavers for maximum stability and performance. Use under Standard Base or Permeable Base.

Standard Base – Min. 6" – 8" of ¾" Crushed gravel (any road base standard in accordance with ASTM-D2940) compacted to 98% Standard Proctor Density (SPD).

Standard Bedding Course – 1" thick of coarse sand– in accordance with ASTM-D2940 screeded over base.

Alternative Permeable Base – Min. 6" – 8" of ¾" clear open-graded stone compacted to achieve full particle lock-up and consolidation. (Note: Clear open-graded does not compact but does consolidate slightly by vibrating the particles together.)

Alternative Permeable Bedding Course – 1" thick of frac14;" clear open-graded chip stone – (ASTM No. 8) screeded over base.

Special Note: Concrete Direct Overlay – In some areas of the country and in some applications, pavers are very successfully placed directly over concrete. Concrete as a base is in itself quite strong, but it can affect the structural integrity of the paver particularly in vehicular applications, where the concrete below is sub-par. The following considerations must be taken into account to insure that the concrete below the surface is ideal:

1. Concrete integrity – concrete must be in good condition, and not crumbling
2. Drainage slope – concrete below must be sloped away from all buildings and structures
3. Drainage holes – In lowest areas of the concrete, drill 1" holes in concrete (on 12" centers) and fill holes with ¼" chip (ASTM No. 8)
4. Base drainage - the area below the concrete must not be subject to frost movement
5. Surface - surface must be totally smooth and flat equivalent to the desired finished surface
6. Waterproofing - may be required when installing pavers over concrete where there is a basement or cold cellar below. Install an impervious rubber membrane over the surface prior to installing any pavers over the surface.
7. Jointing Sand - Use an impervious polymeric sand when installing over concrete

Jointing Material and Joint Stabilization

All sands must meet ASTM C144 or C33 Specifications. For best appearance and optimal performance, keep jointing materials approximately 1/8" below the chamfer (bevel edge) of the paver.

Good Option: Ordinary sharp jointing sand in accordance with ASTM C144 or C33. (Common name: Concrete Sand) Important Information (Will update to the same Product Family)

Best Option 1: Any polymeric sand or resin-based joint sand . Always follow manufacturer's specifications and requirements.

Best Option 2: Ordinary clean concrete sand stabilized with a water-based or solvent-based joint sand stabilizer sealer. Always follow sealer manufacturer's application specifications and requirements.

Handling – This product is large format and should be installed using a suction lifting device. Do not let units bang against each other when handling as chipping may occur.

Edge Restraint - Install an edge restraint around the perimeter of any pavers not restrained by existing concrete edges and/or building structures. Spike-in edge restraints come in plastic and metal and work well for most applications. A concrete curb or a sub-surface concrete wedge can also be installed to retain the edge.

Paver Compaction - Only use a rubber-roller compactor for the final compaction.

Cleaners – Any cleaner specifically designed for pavers may be used for color restoration or general cleaning. Follow manufacturer's dilution rates and application procedures. Always test a small area to make sure the results are as expected.

Sealers

- Product may be sealed for aesthetic or cleanliness reasons but it is not required
- Use any sealer approved for concrete pavers

- Select type for desired aesthetics
- Product must be cleaned before sealing
- Always read and follow manufacturer's application procedures
- Always test a small area to make sure the results are as expected

Note: The Americans with Disabilities Act Accessibility Guidelines (ADAAG) provides measurable criteria to determine compliance, not individual product evaluation. Gaps, joints or openings, greater than ½" horizontal and ¼" vertical should be avoided as they can disrupt wheelchair maneuvering (United States Access Board – Guidelines and Standards).

Contact Unilock Representative for actual color samples and availability. Unilock reserves the right to change product information without notice.

PDF Generated October 29, 2024, 5:34 pm

