

# UNIVERSAL

**UNILOCK**

TECH SHEET

REGION NEW YORK



**UNILOCK** Exclusive Technologies

■ ENDURACOLOR

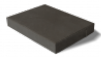
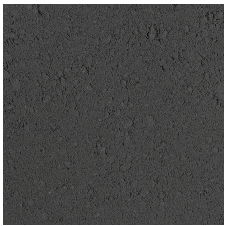


**LIGHT GREY**  
**FINISH: SMOOTH**  
**PREMIER**



**UNIVERSAL COPING**  
482mm x 70mm x 355mm  
19" x 2 3/4" x 14"

**DARK CHARCOAL**  
**FINISH: SMOOTH**  
**PREMIER**

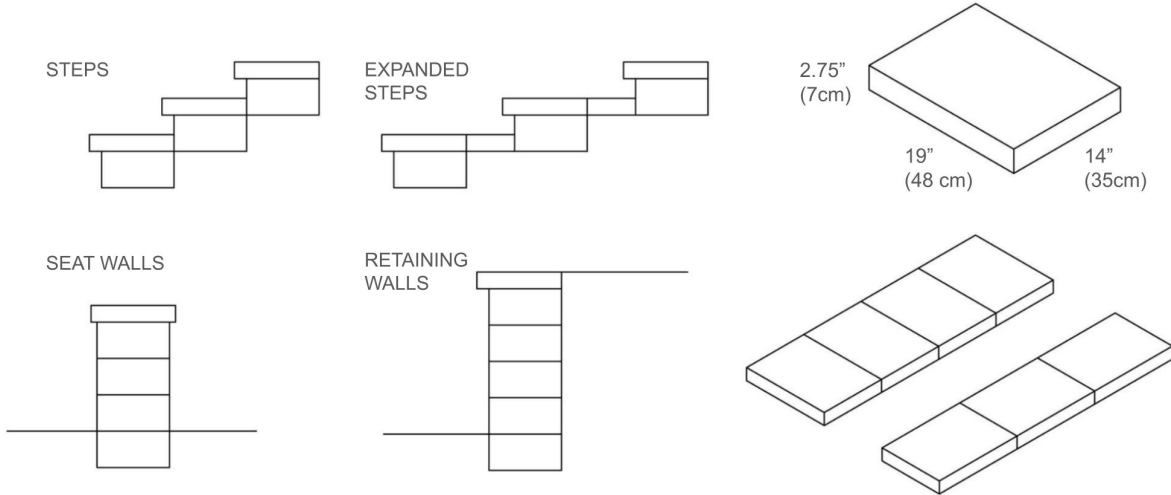


**UNIVERSAL COPING**  
482mm x 70mm x 355mm  
19" x 2 3/4" x 14"

**TYPICAL CROSS SECTION**

Note: Base, screed bed, infill aggregates and or reinforcements may vary based on project requirements or as specified by engineer.

**UNIVERSAL COPING**



- Note:
- Install in Soldier or Sailor fashion
  - Adhere using concrete adhesive
  - Can be used on any Unilock wall system

## PACKAGING

	UNIVERSAL COPING ( SMOOTH PREMIER )	UNIVERSAL BASE ( CLASSIC )
UNIT THICKNESS (MM)	70	55
LAYERS PER BUNDLE	8	9
FCFT PER BUNDLE	17.44	-
FCFT PER LAYER	2.18	-
FCFT PER UNIT	0.36	-
UNITS PER BUNDLE	48	54
UNITS PER LAYER	6	6
LBS PER BUNDLE	2,864	2,502.36
LBS PER LAYER	358	278.04
LBS PER UNIT	59.67	46.34

**INSTALLATION NOTES**

---

## UNIVERSAL / U-GRIP BASE UNIT IMPORTANT INFORMATION

The base units are designed to provide the installer a flat surface on the retaining wall base gravel to facilitate quick and easy installation of any retaining wall type. These units also help bridge smaller retaining wall units to prevent differential settlement between units. The multiple lines embossed into the surface provide an alignment guide when placing retaining wall units.

## Handling and Installation –

The top of the unit should be located below grade in the base trench so that a minimum 6” of the first row of block sits below grade as well.

Units can be individually levelled or they can be placed on a screeded bed of stone chip for rapid installation. Although rectangular in shape, they can be installed in a “sailor” pattern or a “soldier” pattern depending on the wall type and/or the desired appearance.

Always sweep the surface clean prior to placing the first row of retaining wall units.

---

Contact Unilock Representative for actual color samples and availability. Unilock reserves the right to change product information without notice.

PDF Generated October 26, 2024, 12:21 pm

**UNILOCK**