

ENDURA™ COPING

UNILOCK®

TECH SHEET

THICKNESS 60MM

REGION NEW YORK



EDGE
CHAMFERED EDGE DETAIL

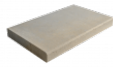


UNILOCK® Exclusive Technologies

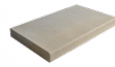
ENDURACOLOR

COLORS

INDIANA BUFF
FINISH: SMOOTH
PREMIER

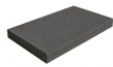
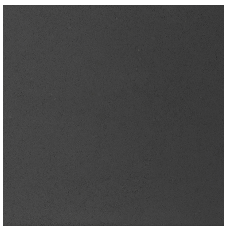


COPING CHAMFERED
900mm x 60mm x 485mm
35 1/2" x 2 3/8" x 19"

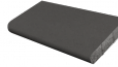


COPING CHAMFERED
600mm x 60mm x 355mm
23 5/8" x 2 3/8" x 14"

DARK CHARCOAL
FINISH: SMOOTH
PREMIER

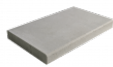


COPING CHAMFERED
900mm x 60mm x 485mm
35 1/2" x 2 3/8" x 19"

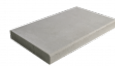


COPING FULLNOSE
600mm x 60mm x 355mm
23 5/8" x 2 3/8" x 14"

STERLING
FINISH: SMOOTH
PREMIER

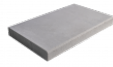
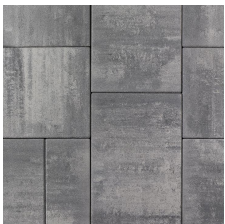


COPING CHAMFERED
900mm x 60mm x 485mm
35 1/2" x 2 3/8" x 19"



COPING CHAMFERED
600mm x 60mm x 355mm
23 5/8" x 2 3/8" x 14"

GRANITE FUSION
FINISH: SMOOTH
PREMIER



COPING CHAMFERED
600mm x 60mm x 355mm
23 5/8" x 2 3/8" x 14"

OAT BEIGE
FINISH: SMOOTH
PREMIER



COPING FULLNOSE
600mm x 60mm x 355mm
23 5/8" x 2 3/8" x 14"

PACKAGING

	COPING CHAMFERED	COPING CHAMFERED	FULLNOSE COPING	COPING FULLNOSE	FULLNOSE COPING
UNIT THICKNESS (MM)	60	60	60	60	60
LAYERS PER BUNDLE	6	6	6	-	-
FCFT PER BUNDLE	6.96	-	-	-	-
FCFT PER LAYER	1.16	-	-	-	-
FCFT PER UNIT	0.58	-	-	-	-
UNITS PER BUNDLE	24	12	24	-	-
UNITS PER LAYER	4	2	4	-	-
LBS PER BUNDLE	1,509.74	1,547.40	1,509.74	-	-
LBS PER LAYER	251.62	257.90	251.62	-	-
LBS PER UNIT	62.91	128.95	62.91	-	-

INSTALLATION NOTES

IMPORTANT INFORMATION

The base units are designed to provide the installer a flat surface on the retaining wall base gravel to facilitate quick and easy installation of any retaining wall type. These units also help bridge smaller retaining wall units to prevent differential settlement between units. The multiple lines embossed into the surface provide an alignment guide when placing retaining wall units.

Handling and Installation –

The top of the unit should be located below grade in the base trench so that a minimum 6” of the first row of block sits below grade as well.

Units can be individually levelled or they can be placed on a screeded bed of stone chip for rapid installation. Although rectangular in shape, they can be installed in a “sailor” pattern or a “soldier” pattern depending on the wall type and/or the desired appearance.

Always sweep the surface clean prior to placing the first row of retaining wall units.

Contact Unilock Representative for actual color samples and availability. Unilock reserves the right to change product information without notice.

PDF Generated July 3, 2026, 10:52 am

UNILOCK