

BEACON HILL™ SMOOTH



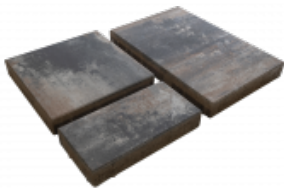
THICKNESS 80MM
REGION ONTARIO



EDGE
ROUNDED BEVEL EDGE

UNILOCK Exclusive Technologies

ENDURACOLOR

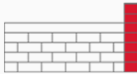


APPLICATIONS

Note: Not all sizes are suitable for every application. Contact Unilock Representative for assistance.



Patio & Walkway



Borders and Accents



Driveway

COLORS

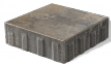
FOSSIL
FINISH: SMOOTH
PREMIER



LARGE RECTANGLE
380mm x 570mm x 80mm
15" x 22 1/2" x 3 1/8"

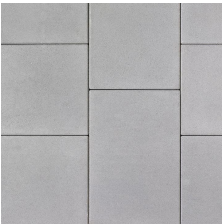


SMALL RECTANGLE
190mm x 380mm x 80mm
7 1/2" x 15" x 3 1/8"

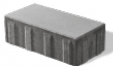


SQUARE
380mm x 380mm x 80mm
15" x 15" x 3 1/8"

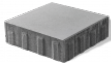
OPAL BLEND
FINISH: SMOOTH
PREMIER



LARGE RECTANGLE
380mm x 570mm x 80mm
15" x 22 1/2" x 3 1/8"



SMALL RECTANGLE
190mm x 380mm x 80mm
7 1/2" x 15" x 3 1/8"



SQUARE
380mm x 380mm x 80mm
15" x 15" x 3 1/8"

GRANITE FUSION
SRI = 29

FINISH: SMOOTH
PREMIER



LARGE RECTANGLE
380mm x 570mm x 80mm
15" x 22 1/2" x 3 1/8"



SMALL RECTANGLE
190mm x 380mm x 80mm
7 1/2" x 15" x 3 1/8"



SQUARE
380mm x 380mm x 80mm
15" x 15" x 3 1/8"

DARK CHARCOAL
FINISH: SMOOTH
PREMIER



SMALL RECTANGLE
190mm x 380mm x 80mm
7 1/2" x 15" x 3 1/8"

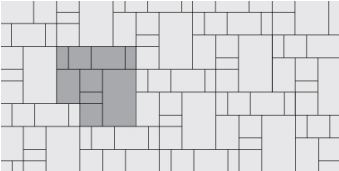
MIDNIGHT CHARCOAL
FINISH: SMOOTH
PREMIER



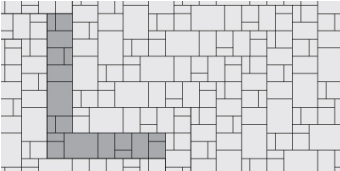
SMALL RECTANGLE
190mm x 380mm x 80mm
7 1/2" x 15" x 3 1/8"

JOINT SPACING = 4MM

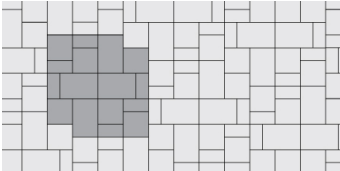
LAYING PATTERNS



LP BEACONHILL MULTI UNIT
RANDOM C



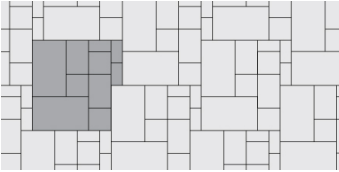
LP BEACONHILL MULTI UNIT
RANDOM E



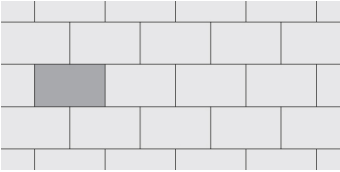
LP BEACONHILL FIXED RANDOM
B



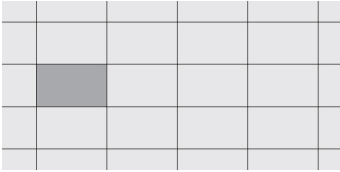
LP BEACONHILL FIXED RANDOM
A



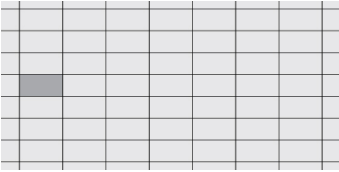
LP BEACONHILL MULTI UNIT
RANDOM G



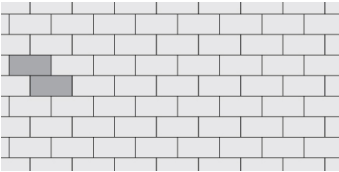
LP BEACONHILL 21X35 RB H



LP BEACONHILL 21X35 SB I



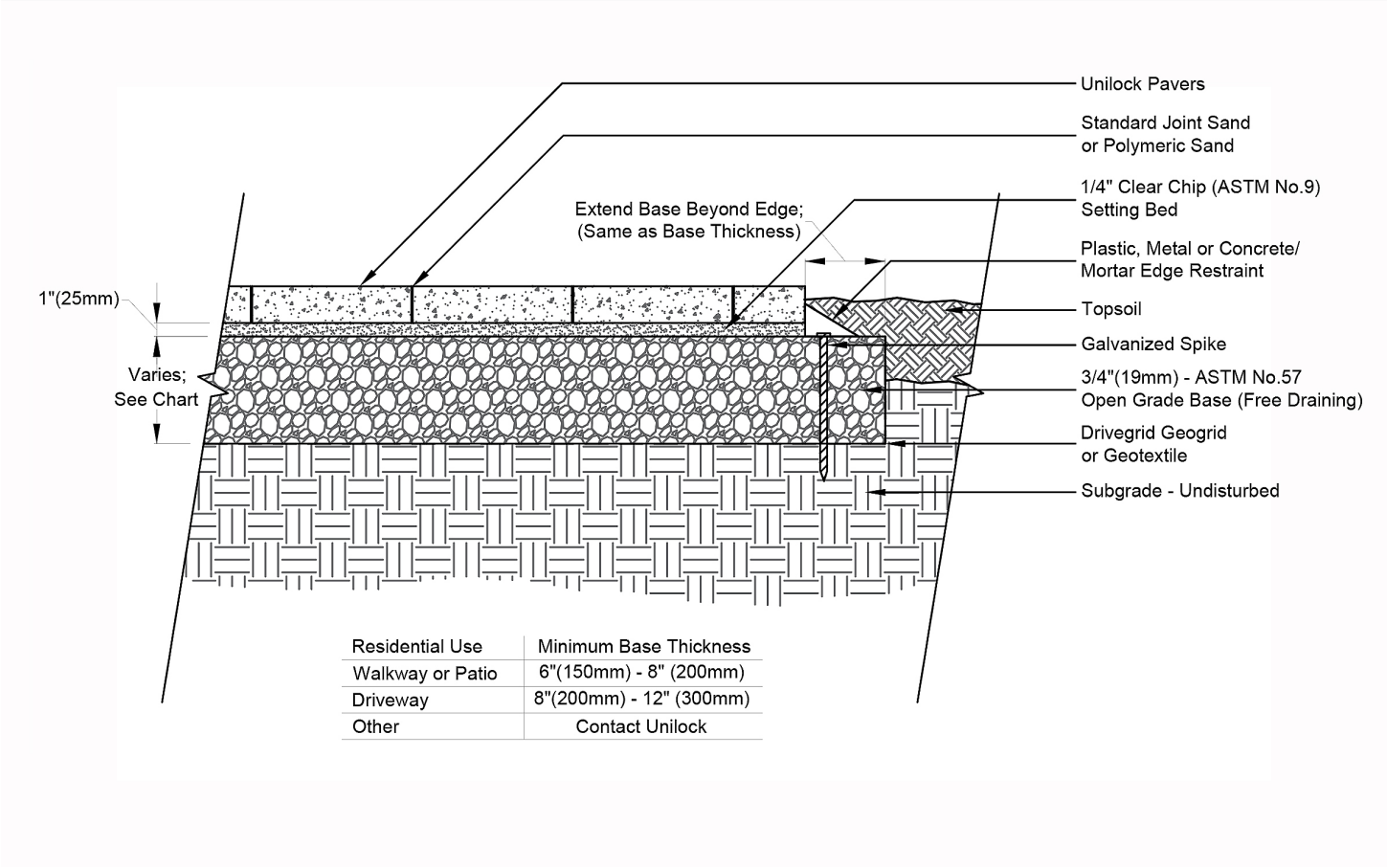
LP BEACONHILL 7.5X15 SB J



LP BEACONHILL 7.5X15 RB K

TYPICAL CROSS SECTION

Note: Base, screed bed, infill aggregates and or reinforcements may vary based on project requirements or as specified by engineer.



PACKAGING

	(60) RANDOM RANDOM BUNDLE	(80) RANDOM RANDOM BUNDLE	XL	SMALL RECTANGLE	SMALL RECTANGLE
UNIT THICKNESS (MM)	60	80	60	60	80
LAYERS PER BUNDLE	9	7	6	9	7
SQ FT PER BUNDLE	104.91	81.60	69.94	104.91	81.60
SQ FT PER LAYER	11.66	11.66	11.66	11.66	11.66
SQ FT PER UNIT	1.46	1.46	5.83	0.78	0.78
UNITS PER BUNDLE	72	56	12	135	105
UNITS PER LAYER	8	8	2	15	15
LIN FT PER BUNDLE - SOLDIER	22.44	84.15	65.45	-	-
LIN FT PER LAYER - SOLDIER	3.74	9.35	9.35	-	-
LIN FT PER UNIT - SOLDIER	1.87	0.62	0.62	-	-
LIN FT PER BUNDLE - SAILOR	84.15	65.45	37.38	168.31	130.91
LIN FT PER LAYER - SAILOR	9.35	9.35	6.23	18.70	18.70
LBS PER BUNDLE	2,878.20	2,986.02	1,918.80	2,878.20	2,985.98
LBS PER LAYER	319.80	426.57	319.80	319.80	426.57
LBS PER UNIT	39.98	53.32	159.90	21.32	28.44

INSTALLATION NOTES

The large unit sizes and the pleasant colors of Beacon Hill make it a fabulous patio or pool deck paver. The subtle flagstone impression provides for a striking visual day or night.

Recommended Base Stabilization – one layer of DriveGrid™ stabilization grid between subgrade and base material. Recommended depth 8" to 10" below pavers for maximum stability and performance. Use under Standard Base or Permeable Base.

Standard Base – Min. 6" – 8" of ¾" Crusher Run gravel (any road base standard in accordance with ASTM-D2940) compacted to 98% Standard Proctor Density (SPD).

Standard Bedding Course – 1" thick of coarse sand– in accordance with ASTM-D2940 screeded over base.

Alternative Permeable Base – Min. 6" – 8" of ¾" clear open-graded stone compacted to achieve full particle lock-up and consolidation. (Clear open-graded does not compact but does consolidate slightly by rattling the particles together.)

Alternative Permeable Bedding Course – 1" thick of 1/4" clear open-graded chip stone – (ASTM No. 8) screeded over base.

Special Note: Concrete Direct Overlay – In some areas of the country and in some applications pavers are very successfully placed directly over concrete. Concrete as a base is in itself quite strong, but it can affect the structural integrity of the paver particularly in vehicular applications, where the concrete below is sub-par. The following considerations must be taken into account to insure that the concrete below the surface is ideal:

1. Concrete integrity – concrete must be in good condition, and not crumbling
2. Drainage slope – concrete below must be sloped away from all buildings and structures
3. Drainage holes – In lowest areas of the concrete, drill 1" holes in concrete (on 12" centers) and fill holes with ¼" chip (ASTM No. 8)
4. Base drainage - the area below the concrete must not be subject to frost movement
5. Surface - surface must be totally smooth and flat equivalent to the desired finished surface
6. Waterproofing - may be required when installing pavers over concrete where there is a basement or cold cellar below. Install an impervious rubber membrane over the surface prior to installing any pavers over the surface.
7. Jointing Sand - Use an impervious polymeric sand when installing over concrete

Jointing Material and Joint Stabilization

All sands must meet ASTM C144 or C33 Specifications. For best appearance and optimal performance,, keep jointing materials approximately 1/8" below the chamfer (bevel edge) of the paver.

Good Option: Ordinary sharp jointing sand in accordance with ASTM C144 or C33. (Common name: Concrete Sand)

Best Option: Any polymeric sand or ordinary concrete sand stabilized by a water-based or solvent-based joint sand stabilizer sealer. Always follow manufacturer's application specifications and requirements.

Handling – This product has no special handling requirements, but a vacuum placer tool may be used to more easily install XL units.

Edge Restraint - Always install an edge restraint around the perimeter of any paver installation not restrained by building structures. Spike-in edge restraints come in plastic and metal and work well for most applications. A concrete curb or a sub-surface concrete wedge can also be installed to retain the edge.

Paver Compaction - Always use a protective polymer pad on the bottom of your compactor when doing the final compaction of the pavers. An alternative is to use a rubber-roller compactor for the final compaction.

Cleaners – Any cleaner specifically designed for pavers may be used for color restoration or general cleaning. Follow manufacturer's dilution rates and application procedures. Always test a small area to make sure the results are as expected.

Sealers

- Product may be sealed for aesthetic or cleanliness reasons but it is not required
- Use any sealer approved for concrete pavers

- Select type for desired aesthetics
- Product must be cleaned before sealing
- Always read and follow manufacturer's application procedures
- Always test a small area to make sure the results are as expected

The Americans with Disabilities Act Accessibility Guidelines (ADAAG) provides measurable criteria to determine compliance, not individual product evaluation. Gaps, joints or openings, greater than ½" horizontal and ¼" vertical should be avoided as they can disrupt wheelchair maneuvering (United States Access Board – Guidelines and Standards).

Contact Unilock Representative for actual color samples and availability. Unilock reserves the right to change product information without notice.

PDF Generated July 3, 2025, 10:29 am

