

ARCANA™

UNILOCK®

TECH SHEET

THICKNESS 50MM

REGION MICHIGAN



EDGE
MICRO BEVEL DETAIL



UNILOCK® Exclusive Technologies

ENDURACOLOR

EASYCLEAN™

APPLICATIONS

Note: Not all sizes are suitable for every application. Contact Unilock Representative for assistance.



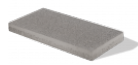
Patio & Walkway

COLORS

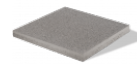
VIVANTO

SRI = 16

FINISH: ARCANA



12"X24"
301mm x 606mm x 50mm
11 7/8" x 23 7/8" x 2"



24"X24"
606mm x 606mm x 50mm
23 7/8" x 23 7/8" x 2"

CORVARA

SRI = 34

FINISH: ARCANA



12"X24"
301mm x 606mm x 50mm
11 7/8" x 23 7/8" x 2"



18"X24"
453mm x 606mm x 50mm
17 7/8" x 23 7/8" x 2"



24"X24"
606mm x 606mm x 50mm
23 7/8" x 23 7/8" x 2"

AVORIO

FINISH: ARCANA



12"X24"
301mm x 606mm x 50mm
11 7/8" x 23 7/8" x 2"



18"X24"
453mm x 606mm x 50mm
17 7/8" x 23 7/8" x 2"

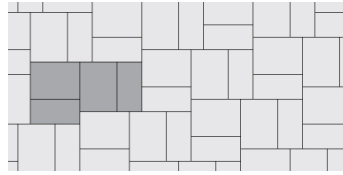


24"X24"
606mm x 606mm x 50mm
23 7/8" x 23 7/8" x 2"

LAYING PATTERNS



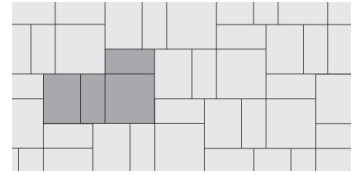
LP ARCANA MULTI UNIT RANDOM
G



LP ARCANA MULTI UNIT RANDOM
B



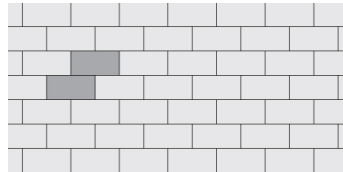
LP ARCANA MULTI UNIT RANDOM
D



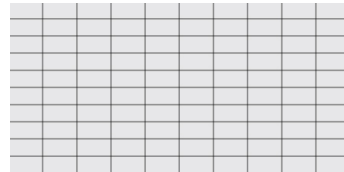
LP ARCANA MULTI UNIT RANDOM
A



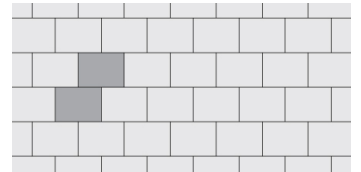
LP ARCANA MULTI UNIT RANDOM
F



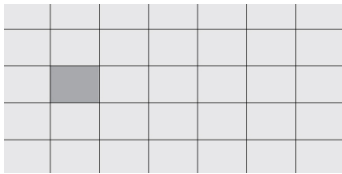
LP ARCANA 12X24 RB I



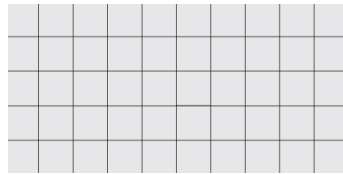
LP ARCANA 12X24 SB J



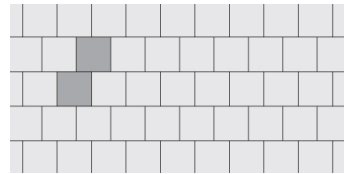
LP ARCANA 18X24 RB O



LP ARCANA 18X24 SB A



LP ARCANA 24X24 SB A



LP ARCANA 24X24 RB D

TYPICAL CROSS SECTION

Note: Base, screed bed, infill aggregates and or reinforcements may vary based on project requirements or as specified by engineer.



PACKAGING

	12"X24"	18"X24"	24"X24"
UNIT THICKNESS (MM)	50	50	50
LAYERS PER BUNDLE	18	18	18
SQ FT PER BUNDLE	36	54	72
SQ FT PER LAYER	2	3	4
SQ FT PER UNIT	2	3	4
UNITS PER BUNDLE	18	18	18
UNITS PER LAYER	1	1	1
LIN FT PER BUNDLE - SOLDIER	35.55	53.50	71.57
LIN FT PER LAYER - SOLDIER	1.98	2.97	3.98
LIN FT PER UNIT - SOLDIER	1.98	2.97	3.98
LIN FT PER BUNDLE - SAILOR	71.57	71.57	71.57
LIN FT PER LAYER - SAILOR	3.98	3.98	3.98
LBS PER BUNDLE	2,592	2,592	1,728
LBS PER LAYER	144	144	96
LBS PER UNIT	144	144	96

INSTALLATION NOTES

ARCANA™

Recommended Base Stabilization – one layer of DriveGrid™ stabilization grid (or as specified by engineer) between subgrade and base material. Use under Standard Base Gravel or Permeable Base Gravel. Recommended depth 8” to 10” below pavers for maximum stability and performance OR as specified by project engineer.

Standard Base – Min. 6” – 8” of ¾” Crusher Run gravel (any road base standard in accordance with ASTM-D2940) compacted to 98% Standard Proctor Density (SPD).

Standard Bedding Course – 1” thick of coarse sand– in accordance with ASTM-D2940 screeded over base.

Alternative Permeable Base – Min. 6” – 8” of ¾” clear (ASTM No. 57) open-graded stone compacted to achieve full particle lock-up and consolidation. (Clear open-graded does not compact but does consolidate slightly by rattling the particles together.)

Alternative Permeable Bedding Course – 1” thick of 1/4” clear open-graded chip stone – (ASTM No. 8 or 9) screeded over base.

Jointing Materials

All sands must meet ASTM C144 or C33 Specifications. For best appearance and optimal performance, keep jointing materials approximately 1/8” below the chamfer (bevel edge) of the paver.

Good Option: Ordinary sharp jointing sand in accordance with ASTM C144 or C33. (Common name: Concrete Sand)

Best Option: Any polymeric sand or ordinary concrete sand stabilized by a water-based or solvent-based joint sand stabilizer sealer. Always follow manufacturer’s application specifications and requirements. Only use polymeric if specified by project engineer.

Handling – This product has zero bevel edges so handle carefully to prevent edge chipping.

Edge Restraint - Always install an edge restraint around the perimeter of any paver installation not restrained by building structures. Spike-in edge restraints come in plastic and metal and work well for most applications. A concrete curb or a sub-surface concrete wedge can also be installed to retain the edge.

Paver Compaction - Always use a protective polymer pad on the bottom of your compactor when doing the final compaction of the pavers. An alternative is to use a rubber-roller compactor for the final compaction. No compaction is required if installed on roof deck pedestals.

Cleaners – Any cleaner specifically designed for pavers may be used for color restoration or general cleaning. Follow manufacturer’s dilution rates and application procedures. Always test a small area to make sure the results are as expected.

Sealers

- Product may be sealed for aesthetic or cleanliness reasons but it is not required
- Use any sealer approved for concrete pavers
- Select type for desired aesthetics
- Product must be cleaned before sealing
- Always read and follow manufacturer’s application procedures
- Always test a small area to make sure the results are as expected

The Americans with Disabilities Act Accessibility Guidelines (ADAAG) provides measurable criteria to determine compliance, not individual product evaluation. Gaps, joints or openings, greater than ½” horizontal and ¼” vertical should be avoided as they can disrupt wheelchair maneuvering (United States Access Board – Guidelines and Standards).

Contact Unilock Representative for actual color samples and availability. Unilock reserves the right to change product information without notice.

PDF Generated December 22, 2024, 11:47 am

