



# Eco-Optiloc™

1-800-UNILOCK | [UNILOCK.COM](http://UNILOCK.COM)

**UNILOCK**  
PAVERS & WALLS

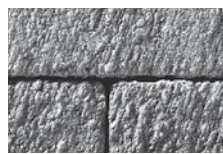




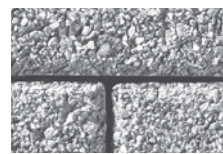
STANDARD FINISH



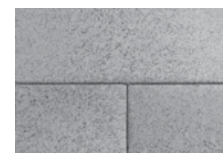
PREMIER FINISH



IL CAMPO FINISH



SERIES™ FINISH



UMBRIANO® FINISH

**SPECIAL ORDER  
PRODUCT**

Bundle Type	SINGLE
Thickness (mm)	<b>80MM</b>
Dimension mm	250mm x 250mm x 80mm
Dimension Imperial	9 7/8" x 9 7/8" x 3 1/8"



STANDARD  
9 7/8" x 9 7/8" x 3 1/8"  
250 x 250 x 80mm

SQFT PER	Bundle	84.80
	Layer	10.60000
	Section	-
	Stone	0.50

PER BUNDLE	Layers	8.00
	Sections	-

SOLDIER LNFT PER	SqFt	-
	Section	-
	Layer	-
	Bundle	-

SAILOR LNFT PER	SqFt	-
	Section	-
	Layer	-
	Bundle	-

UNITS PER	SqFt	1.98
	Section	-
	Bundle	168.00

LBS PER	Layer	363
	Section	-
	Bundle	2,908

## ADVANTAGES

### PERMEABLE

Can be installed to allow water to flow through

### DRIVE FRIENDLY

Can handle vehicular loads

Notes: \*Special Order - Lead time is required, minimum quantities apply. Contact your representative for details. This product is optimized for mechanical installation. **SOLD IN FULL BUNDLES ONLY** and is shipped on a refundable skid. All measurements are nominal. **Important:** Textured surfaces require a buffer between the plate compactor and the paver surface to prevent scuffing when compacting. Contact Unilock for information.

Internal Use Only. EOP CH

**SPECIAL ORDER PRODUCT - NON-STOCK**