



**Eco-Line<sup>®</sup>** 

1-800-UNILOCK | UNILOCK.COM

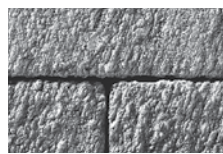
**UNILOCK**  
PAVERS & WALLS



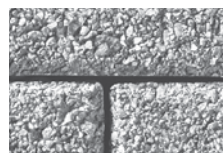
STANDARD FINISH



PREMIER FINISH



IL CAMPO FINISH



SERIES™ FINISH



UMBRIANO® FINISH

**SPECIAL ORDER PRODUCT**

	<b>Bundle Type</b>	<b>RANDOM</b>
	Thickness (mm)	<b>100MM</b>
	Dimension mm	
	Dimension Imperial	

<b>SQFT PER</b>	Bundle	66.20
	Layer	11.03000
	Section	-
	Stone	0.34

<b>PER BUNDLE</b>	Layers	6.00
	Sections	-

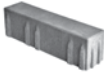







<b>SOLDIER LNFT PER</b>	SqFt	-
	Section	-
	Layer	-
	Bundle	-

<b>SAILOR LNFT PER</b>	SqFt	-
	Section	-
	Layer	-
	Bundle	-

<b>UNITS PER</b>	SqFt	2.90
	Section	-
	Bundle	192.00

<b>LBS PER</b>	Layer	504
	Section	-
	Bundle	3,025

**8 UNIT RANDOM BUNDLE**

 <b>14 x 3<sup>5</sup>/<sub>16</sub> x 4"</b> <b>357 x 84 x 100mm</b> 20 units/Bundle .32 Sq.Ft./Stone	 <b>12<sup>1</sup>/<sub>2</sub> x 3<sup>5</sup>/<sub>16</sub> x 4"</b> <b>317 x 84 x 100mm</b> 20 units/Bundle .29 Sq.Ft./Stone	 <b>11 x 3<sup>5</sup>/<sub>16</sub> x 4"</b> <b>277 x 84 x 100mm</b> 20 units/Bundle .25 Sq.Ft./Stone	 <b>9<sup>3</sup>/<sub>8</sub> x 3<sup>5</sup>/<sub>16</sub> x 4"</b> <b>237 x 84 x 100mm</b> 20 units/Bundle .21 Sq.Ft./Stone
 <b>14 x 4<sup>1</sup>/<sub>2</sub> x 4"</b> <b>357 x 114 x 100mm</b> 20 units/Bundle .44 Sq.Ft./Stone	 <b>12<sup>1</sup>/<sub>2</sub> x 4<sup>1</sup>/<sub>2</sub> x 4"</b> <b>317 x 114 x 100mm</b> 20 units/Bundle .39 Sq.Ft./Stone	 <b>11 x 4<sup>1</sup>/<sub>2</sub> x 4"</b> <b>277 x 114 x 100mm</b> 20 units/Bundle .34 Sq.Ft./Stone	 <b>9<sup>3</sup>/<sub>8</sub> x 4<sup>1</sup>/<sub>2</sub> x 4"</b> <b>237 x 114 x 100mm</b> 20 units/Bundle .29 Sq.Ft./Stone

**ADVANTAGES**

**PERMEABLE**

Can be installed to allow water to flow through

**DRIVE FRIENDLY**

Can handle vehicular loads

Notes: **Special Order - Lead time is required, minimum quantities apply. SOLD IN FULL BUNDLES ONLY** and is produced and sold on a required, refundable skid. Custom finish and color options are available. \* Weights and Square Feet may vary depending on plant of manufacture and finish. **Important: A urethane rubber paver mat must be used to prevent scuffing when compacting.** This product is optimized for mechanical installation. All measurements are nominal. Contact Unilock for more information.

Internal Use Only. EOL CH

SPECIAL ORDER PRODUCT - NON-STOCK