

# DURA HOLD®

## OUTSIDE CORNER CONSTRUCTION

REF: Detail\_DuraHold\_Outside Corner Construction

### DuraHold Outside Modified Corners

Imperial dimensions

Angle (degrees)	Front (inches)	Back (inches)	Face Cut (inches)	Cut (inches)	Unit to Modify
5	37 1/8	36	1	24	Standard
10	38 1/8	36	2 1/8	24	Standard
15	39 1/8	36	3 1/8	24	Standard
20	40 1/4	36	4 1/4	24	Standard
25	41 3/8	36	5 3/8	24	Standard
30	42 1/2	36	6 3/8	24	Standard
35	43 5/8	36	7 5/8	24	Standard
40	44 3/4	36	8 3/4	24	Standard
45	46	36	10	24	90° corner
50	47 1/4	36	11 1/4	24	90° corner
55	48 1/2	36	12 1/2	24	90° corner
60	49 7/8	36	13 7/8	24	90° corner
65	51 3/8	36	15 1/4	24	90° corner
70	52 7/8	36	16 7/8	24	90° corner
75	54 1/2	36	18 3/8	24	90° corner
80	56 1/8	36	20 1/8	24	90° corner
85	58	36	22	24	90° corner
90	Use manufactured 90° corner unit				
91-180	Not recommended				

Metric dimensions

Angle (degrees)	Front (mm)	Back (mm)	Face Cut (mm)	Cut (mm)	Unit to Modify
5	942	915	27	610	Standard
10	968	915	53	610	Standard
15	995	915	80	610	Standard
20	1023	915	108	610	Standard
25	1050	915	135	610	Standard
30	1078	915	163	610	Standard
35	1107	915	192	610	Standard
40	1137	915	222	610	Standard
45	1168	915	253	610	90° corner
50	1199	915	284	610	90° corner
55	1233	915	318	610	90° corner
60	1267	915	352	610	90° corner
65	1304	915	389	610	90° corner
70	1342	915	427	610	90° corner
75	1383	915	468	610	90° corner
80	1427	915	512	610	90° corner
85	1474	915	559	610	90° corner
90	Use manufactured 90° corner unit				
91-180	Not recommended				

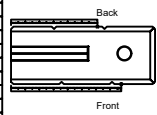
1. Create modified right corner unit using required unit.

2. Place modified right corner unit on first course.

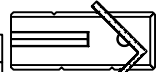
3. Create modified left corner unit using required unit.

4. Place modified left corner unit on next course.

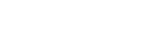
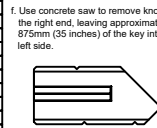
a. Identify inside angle required. Mark corresponding Front and Back dimensions from left end of unit.



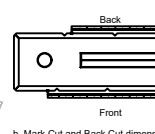
b. Mark Cut and Back Cut dimensions on square. Line up marks on square with marks on unit.



c. Scribe Cut and Back Cut lines on unit.  
d. Use concrete saw to cut along Cut line.  
e. Use concrete saw to cut along Back Cut line.



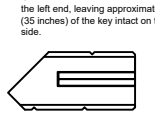
a. Identify inside angle required. Mark corresponding Front and Back dimensions from right end of unit.



b. Mark Cut and Back Cut dimensions on square. Line up marks on square with marks on block.

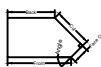


c. Scribe Cut and Back Cut lines on unit.  
d. Use concrete saw to cut along Cut line.  
e. Use concrete saw to cut along Back Cut line.  
f. Use concrete saw to remove knob from the left end, leaving approximately 875mm (35 inches) of the key intact at the right side.

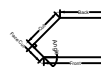


5. Repeat step 1 through 4 until desired height is achieved.

Outside Right corner unit



Outside Left corner unit



Engineering design by RisiStone Inc.

UNILOCK.COM | 1-800-UNILOCK

**UNILOCK®**  
PAVERS & WALLS