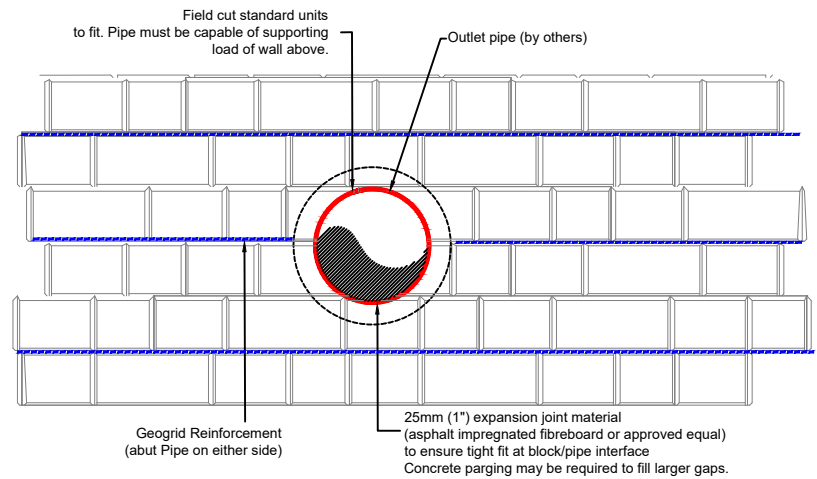
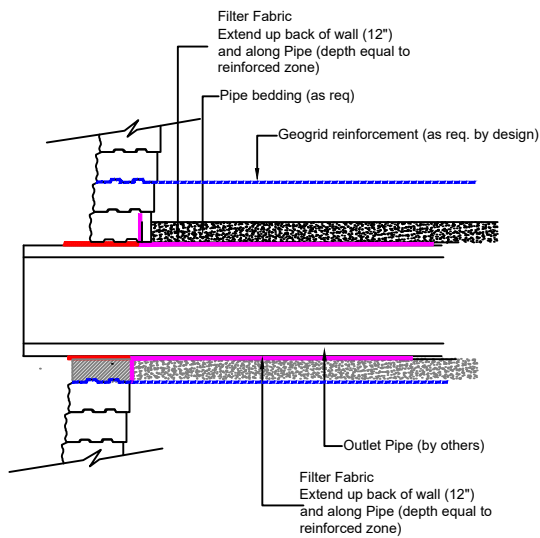


CONCORD XL[®]

CONDUIT THROUGH FACE OF WALL

REF: Detail_Concord XL_Conduit through Face of Wall



Notes:

1. Pipe/Conduit designed by others. Pipe must be able to bear weight of wall above.
2. Pipe design must allow for total and differential settlement tolerances meeting or exceeding those of the Wall. Refer to specifications.
3. Pipe must extend a minimum of 150mm (6") past the face of the wall.
4. Proper erosion/scour protection must be provided by the Pipe designer as necessary based on anticipated flows.



Engineering design by RisiStone Inc.

UNILOCK.COM | 1-800-UNILOCK

UNILOCK[®]
PAVERS & WALLS