



DuraHold 2[®]

1-800-UNILOCK | UNILOCK.COM

UNILOCK[®]
PAVERS & WALLS

DuraHold 2[®]



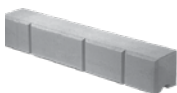
NATURAL



STANDARD
72" x 12" x 14"
1830 x 300 x 360mm
SPECIAL ORDER



COPING
72" x 12" x 14"
1830 x 300 x 360mm
SPECIAL ORDER



CLOSED END COPING
72" x 12" x 14"
1830 x 300 x 360mm
SPECIAL ORDER



TIE-BACK
72" x 12" x 14"
1830 x 300 x 360mm
SPECIAL ORDER



CORNER 90°
36" x 12" x 14"
900 x 300 x 360mm
(Right Corner Shown)
SPECIAL ORDER

	Standard	Coping	Closed-End Coping	Tie-Back	Corner 90°
Bundle Type	SINGLE	SINGLE	SINGLE	RANDOM	SINGLE
Thickness (mm)	300MM	300MM	300MM	300MM	300MM
Dimension mm	1,830mm x 300mm x 360mm	1,830mm x 300mm x 360mm	1,830mm x 300mm x 360mm	360mm x 300mm x 1,830mm	900mm x 300mm x 360mm
Dimension Imperial	72" x 11 7/8" x 14 1/4"	72" x 11 7/8" x 14 1/4"	72" x 11 7/8" x 14 1/4"	14 1/4" X 11 7/8" X 72"	35 1/2" x 11 7/8" x 14 1/4"

FCFT PER	Bundle	6.02	24.08	24.08	1.17	4.17
	Layer	6.02000	6.02000	6.02000	1.17000	4.17000
	Stone	6.02	6.02	6.02	1.17	4.17

PER BUNDLE	Layers	1.00	4.00	4.00	1.00	1.00
	Sections	-	-	-	-	-

LNFT PER	Bundle	6.02	24.10	24.10	-	-
	Unit	6.02	6.02	6.02	-	-

UNITS PER	SqFt	0.17	0.17	0.17	0.85	0.24
	Section	-	-	-	-	-
	Bundle	1.00	4.00	4.00	1.00	1.00

LBS PER	Layer	938	884	884	938	460
	Section	-	-	-	-	-
	Bundle	938	3,536	3,536	938	460

Internal Use Only. DHL ON

Notes: *Special Order - Lead time is required, minimum quantities apply. Sold in full bundles only. Closed-end coping units are closed on both ends so that they may be used as left or right units. Tie-back units are reinforced with steel. 1/2 Standard units are slightly tapered and can be used to create a 45 foot radius. Refer to terms and conditions for placement rates. Unilock, through Risi Stone® Systems International, can provide preliminary site engineering for most commercial projects. Soils information, site drawings, and loading requirements are some of the information details required in order to provide this preliminary site engineering. All measurements are nominal. Contact Unilock for more information.