



Lineo™ Dimensional Stone

1-800-UNILOCK | UNILOCK.COM

UNILOCK
PAVERS & WALLS

LINEO™ DIMENSIONAL STONE

CLASSIC



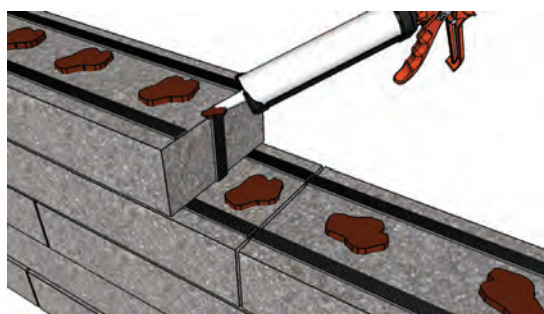
GRANITE BLEND



MIDNIGHT CHARCOAL



SANDSTONE



* Spacers required

PRODUCT ATTRIBUTES

Visual Appearance	Contemporary and sleek lines define Lineo Dimensional Stone with a linear multi-length plank look. Ideal for garden walls, pillars and other outdoor vertical elements, Lineo Dimensional Stone offers up modern design and exceptional flexibility.
Finish	Standard.

RECOMMENDED ADHESIVE



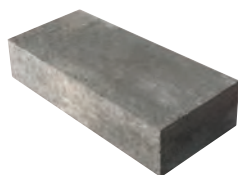
Gator Block Bond XP

- | VOC Compliant
- | Low odor- safe indoors or out
- | Fast curing- provides permanent overnight bond
- | Suitable for use in hot and cold environments
- | Non-shrinking- does not crack
- | Strong and versatile

Coverage: For 1/4" Bead (approx)

10 oz		28 oz	
m	ft.	m	ft.
-9	-31	-26	-86

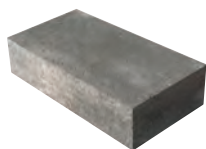
PRODUCT SPECIFICATIONS



XL RECTANGLE

4 x 24 x 8"

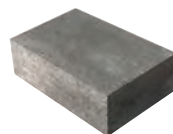
100 x 600 x 200mm



LARGE RECTANGLE

4 x 20 x 8"

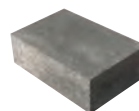
100 x 500 x 200mm



RECTANGLE

4 x 16 x 8"

100 x 400 x 200mm

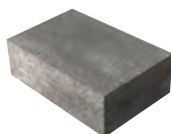


SMALL RECTANGLE

4 x 12 x 8"

100 x 300 x 200mm

4 UNIT RANDOM BUNDLE



PILLAR UNIT

4 x 16 x 8"

100 x 400 x 200mm

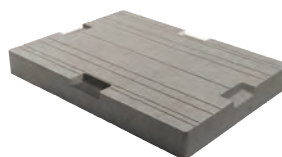


LEDGESTONE PILLAR CAP

29 x 29 x 4"

740 x 740 x 100mm

Pillar Caps available in Buff and Grey. See Steps, Treads & Coping section page 147 for more details



U-GRIP™ BASE PAD

14 x 19 x 2"

355 x 482 x 55mm

TECHNICAL INFORMATION

ASTM C 1372 Standard Specifications for Dry-Cast Segmental Retaining Wall Units

Conforms to:

- C140 for Absorption and Compressive Strength > 3000 PSI
- C1262 for Freeze Thaw Durability <1% mass loss
- C1372 Overall dimensional variations permissible for width, height and length +/- 3.2mm

Unilock standards exceed 6,000 PSI for Lineo™ Dimensional Stone products with:

- 4% absorption avg.
- 5% absorption max.
- Dimensional Accuracy +/-2.00mm

Test results available upon request

Meets the U.S. Architectural & Transportation Barrier Compliance Board Slip-Resistance Surfaces Advisory Guidelines

LEED INFORMATION

Materials & Resources: LEED V4:

Building Product Disclosure and Optimization

Sourcing of Raw Materials - Sourcing of Raw Materials and Extraction • 1 point

Sourcing of Raw Materials - Leadership Extraction Practices • 1 point

Material Ingredient Reporting - Material Ingredient Reporting • 1 point

Material Ingredient Reporting - Material Ingredient Optimization • 1 point

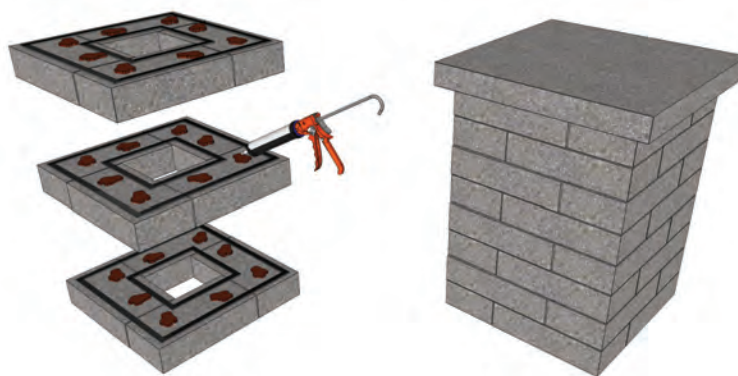
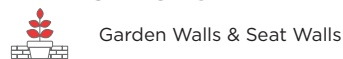
Environmental Product Declaration • 1 point

PRODUCT DATA

Stones & Bundling	Face Feet Per		Linear Feet Per		Units Per		Per Bundle		Lbs Per	
	Bundle	Unit	Bundle	Unit	Bundle	Face Feet	Layers	Sections	Unit	Bundle
Gormley Manufacturing / Pillars Caps - Georgetown Manufacturing; U-Grip - Gormley Manufacturing										
Random Wall Bundle:	29.93		89.06		63		3		43	2,738
XL Rectangle	7.97	0.664	23.71	1.976	12	1.51				
Large Rectangle	6.65	0.554	19.78	1.648	12	1.81				
Rectangle	9.31	0.444	27.72	1.320	21	2.25				
Small Rectangle	6.00	0.333	17.86	0.992	18	3.00				
Pillar Unit	39.84	0.664	79.20	1.320	60	1.51			41	2,435
Ledgestone Pillar Cap			-	-	5				302	1,510
U-Grip Base Pad			85.39	1.581	54		9		46	2,500

Notes: Product sold in full bundles on a refundable skid. Maximum height - 24" (under optimum conditions). All measurements are nominal. Spacing strips are shipped with random wall bundles to create even spacing between units. Free standing wall and is limited to not exceed 24" in height. Contact your Unilock Territory Manager or call 1-800-UNILOCK for further information. *For custom options, please contact your Unilock Territory Manager.

APPLICATIONS



For coping options, we recommend using Ledgestone™, Natural Stone, Universal Coping or Umbriano™ Coping.

*Things to know:

Lineo is not a retaining wall. Lineo is a decorative landscape wall, with a typical height of 12" - 16" above grade. (Higher walls are possible when engineered by a professional engineer.)

In many cases, experienced installers are able to construct higher walls based on the actual design of the project or landscape feature. For example, designs containing 90 degree corners, box-like planters, hollow pillars and landscape features such as grill islands, can be successfully constructed to higher heights.

Disclaimer: The strength and capacity of a Lineo installation is dependent on many factors such as base material, site conditions, drainage, surcharge, design, and the quality and quantity of concrete adhesive used. Unilock cannot be responsible for installation failures. The performance of a Lineo installation rests solely on the installer or project engineer.