



Arcana™ Slab

1-800-UNILOCK | [UNILOCK.COM](https://www.unilock.com)

UNILOCK
PAVERS & WALLS

ARCANA™ SLAB

Exclusive to **UNILOCK**

ENDURACOLOR™



CORVARA



LUGANO

**Special Order Colour*



MODENA



VIVANTO

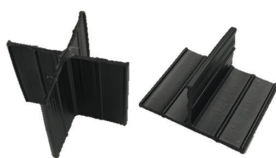
PRODUCT ATTRIBUTES

Visual Appearance	Granite, quartz and marble are exposed in the fine blasted surface of these large format slabs to deliver brilliant colour.
Finish	The silky, matte appearance of Arcana is further enhanced with EasyClean Stain Resistance for easier cleanup of spills and a non-slip surface.

PRODUCT SPECIFICATIONS



23⁷/₈ x 23⁷/₈ x 2"
610 x 610 x 50mm



X & T Slab Spacers

- 250 per bag
- X & T bagged separately
- T spacers 2" x 1"
- X spacers 2" x 2"



RECOMMENDED SAND



Gator G2 MAXX Sand

- | Setting time - 15 mins
- | Sets above 32° F/ 0° C
- | Can be applied if rain is expected (min. 1 hr)
- | Dust free and haze free
- | Requires only one watering
- | Four colours: Beige, Grey, Black and Ivory

Coverage:

Colour	Narrow Joints	Wide Joints
Beige, Grey, Ivory 50lb. bag	65-85 sqft	22-42 sqft
Black 50lb. bag	58-76 sqft	20-38 sqft

EDGE DETAILS



MICRO BEVEL

Unilock recommends using slab spacers when installing Arcana on open grade surface. "T" spacers are needed for running bond patterns. "X" spacers are needed for stack bond patterns. Please contact your Unilock Territory Manager for more information.

TECHNICAL INFORMATION

ASTM C 936 Standard Specifications for Solid Concrete Interlocking Paving Units

Conforms to:

- C140 for Absorption 5% avg - 7% max
- Compressive Strength > 7,200 PSI avg.
- C67 for Freeze-thaw Durability
- C418 for Abrasion Durability
- Dimensional Accuracy **+/- 3 mm**

Test results available upon request

Meets the U.S. Architectural & Transportation Barrier Compliance Board Slip-Resistance Surfaces Advisory Guidelines

LEED INFORMATION

Materials & Resources: LEED V4:

Building Product Disclosure and Optimization

Sourcing of Raw Materials - Sourcing of Raw Materials and Extraction • **1 point**

Sourcing of Raw Materials - Leadership Extraction Practices • **1 point**

Material Ingredient Reporting - Material Ingredient Reporting • **1 point**

Material Ingredient Reporting - Material Ingredient Optimization • **1 point**

Environmental Product Declaration • **1 point**

TECHNICAL ADVANTAGES

ENDURACOLOR™

Refined surface and long-lasting colour



Factory sealed to provide integral surface protection from stains

PEDESTRIAN FRIENDLY

Not recommended for vehicular loads

PRODUCT DATA

Stones & Bundling	Unit	SqFt Per				Per Bundle		Soldier LnFt Per			Sailor LnFt per			Units Per			Lbs Per		
	Thickness	Bundle	Layer	Section	Stone	Layers	Sections	Unit	Section	Bundle	Unit	Section	Bundle	SqFt	Section	Bundle	Layer	Section	Bundle
Chicago Manufacturing / Stocked in Ayr																			
23 7/8 x 23 7/8 x 2"	2" (50mm)	72	-	-	4	9	-	-		-	-		-	0.25		18	-	-	1728

Notes: Product sold in full bundles only on a refundable skid. All measurements are nominal. Unilock recommends that you do not use a plate tamper to compact. Dead blow or roller tamper only. Contact your Unilock Territory Manager or call 1-800-UNILOCK for further information.*For custom options, please contact your Unilock Territory Manager.

APPLICATIONS



Pedestrian



Roof Deck



Wall pairing suggestion- U-CARA

*Paver Maintenance Tips:

- Equip plow scrapers and blades with shoes or high-density plastic blades to reduce the risk of damaging paver joints and the surface
- Only apply min. amount of de-icing salts necessary to melt the snow and ice. Remove excess salt after ice melts
- Regular cleaning routine should include sweeping or blowing loose debris from the pavement surface, and less frequently, deep cleaning with cleaning products and/or water
- Unilock pavers do not require sealing, however, some people choose to do so for aesthetic purposes

*Things to know:

Efflorescence is a naturally occurring calcium salt that can sometimes appear on the surface of concrete and clay products. Efflorescence does not affect the structural integrity of concrete, it is a purely aesthetic issue that typically disappears with no further intervention after a season of rainfall. If desired, the process can be accelerated by washing the surface with an Efflorescence Remover.