

PISA SMOOTH™

REGION CHICAGO




UNILOCK® Exclusive Technologies

■ CLASSIC COAT

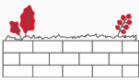


APPLICATIONS

Note: Not all sizes are suitable for every application. Contact Unilock Representative for assistance.



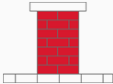
Fire Feature



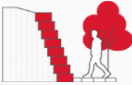
Garden Wall



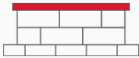
Outdoor Kitchen




Pillars




Retaining Wall



Seat Wall



Water Features

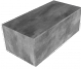


Step

COLORS

GRANITE
FINISH: CLASSIC





CORNER

400mm x 150mm x 200mm
15 3/4" x 5 7/8" x 7 7/8"




XL TAPERED

400mm x 150mm x 300mm
15 3/4" x 5 7/8" x 11 7/8"

FIELDSTONE
FINISH: CLASSIC





CORNER

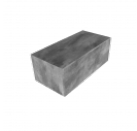
400mm x 150mm x 200mm
15 3/4" x 5 7/8" x 7 7/8"



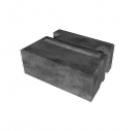
XL TAPERED

400mm x 150mm x 300mm
15 3/4" x 5 7/8" x 11 7/8"

MIDNIGHT CHARCOAL
FINISH: CLASSIC



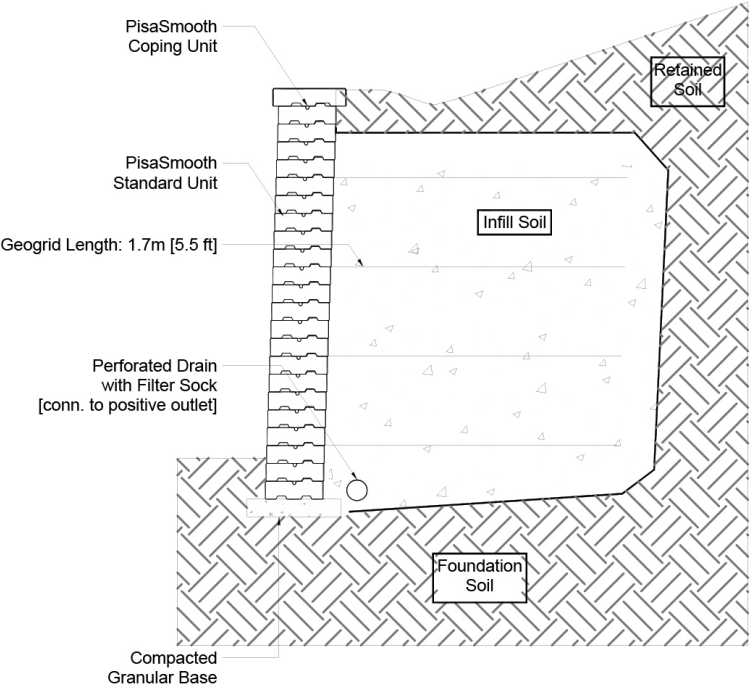
CORNER
400mm x 150mm x 200mm
15 3/4" x 5 7/8" x 7 7/8"



XL TAPERED
400mm x 150mm x 300mm
15 3/4" x 5 7/8" x 11 7/8"

TYPICAL CROSS SECTION

Note: Base, screed bed, infill aggregates and or reinforcements may vary based on project requirements or as specified by engineer.



PACKAGING

	COPING	CORNER	XL TAPERED
UNIT THICKNESS (MM)	75	150	150
LAYERS PER BUNDLE	8	5	5
FCFT PER BUNDLE	15.50	58.15	25.84
FCFT PER LAYER	1.94	11.63	5.17
FCFT PER UNIT	0.32	0.97	0.65
UNITS PER BUNDLE	48	60	40
UNITS PER LAYER	6	12	8
LBS PER BUNDLE	2,282.33	3,593	3,135
LBS PER LAYER	285.29	718.60	627
LBS PER UNIT	47.55	59.88	78.38

INSTALLATION NOTES

PISA SMOOTH™

Applications – Design and build projects such as planters, steps, grill islands, pillars, seat walls and water features. Can be used for straight and curved installations (Radius 5' is the tightest radius).

Capacity – Gravity walls up to 24" (1m). Geogrid reinforced walls can be built higher with engineering from a professional engineer.

Recommended Base Stabilization – one layer of DriveGrid™ stabilization grid between subgrade and base material. Use under Standard Base or Permeable Base.

Standard Base – Min. 6" – 8" of ¾" Crusher Run gravel (any road base standard in accordance with ASTM-D2940) compacted to 98% Standard Proctor Density (SPD).

Alternative Permeable Base – Min. 6" – 8" of ¾" clear open-graded stone compacted to achieve full particle lock-up and consolidation. (Clear open-graded does not compact but does consolidate slightly by rattling the particles together.)

Leveling – Leveling retaining wall blocks directly on top of gravel is tedious and generally does not yield the best results. U-Grip Base units or universal base pads are recommended under all Unilock walls for improved accuracy and speedier installation. Additional benefits include long term structural integrity and an overall better appearance. Poured concrete leveling pads, reinforced with rebar, are also a great way to accomplish leveling, particularly for larger installations. You must ensure that the concrete is poured and finished perfectly in order to achieve a good visual appearance.

Connection – features a tongue and groove connection between layers. Use appropriate concrete adhesive for connection between units where the key has been removed or for corners. Always read adhesive manufacturers' directions prior to gluing.

Handling – Avoid bumping units against each other to prevent chipping.

Coping - This wall requires coping. Choose a manufactured coping such as Pisa Coping, Universal Coping or any of our natural stone coping options. Install with tight joints or 3/16" gap between units and amend with an exterior latex caulking. Cutting may be required; a diamond blade saw is required to cut coping properly. Glue all coping using a specially formulated concrete adhesive that is strong and will not break down over time. Always read adhesive manufacturers' directions prior to gluing.

Contact Unilock Representative for actual color samples and availability. Unilock reserves the right to change product information without notice.

PDF Generated July 26, 2024, 11:37 am

UNILOCK